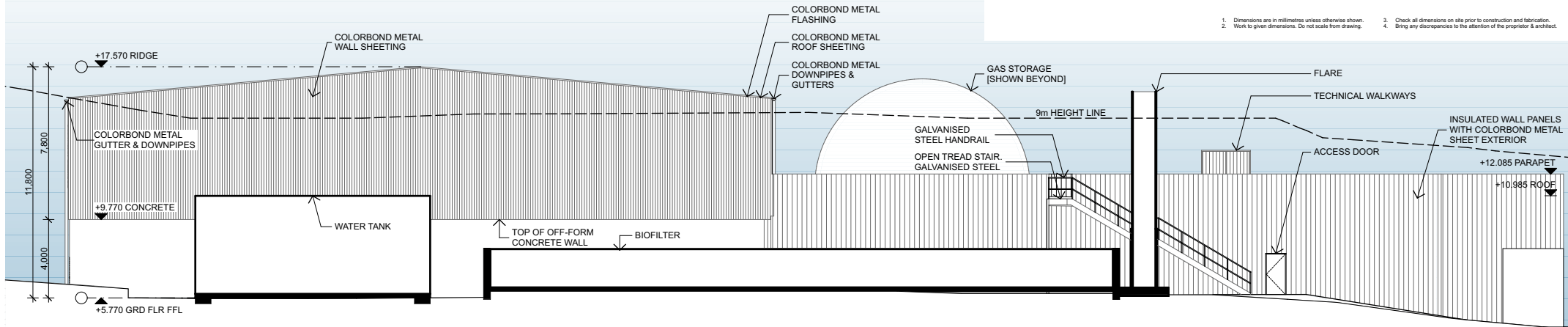
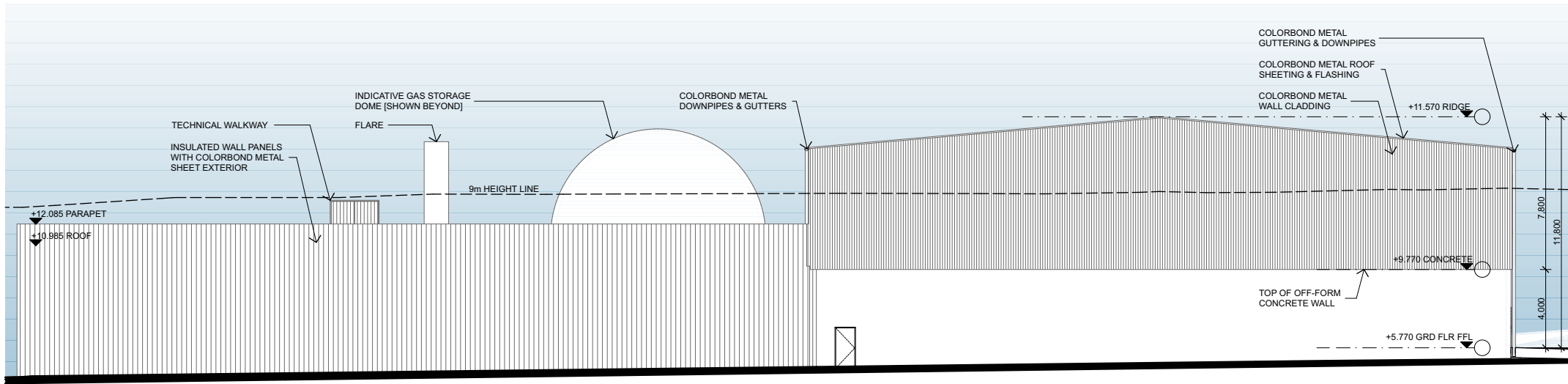


PRELIMINARY

1. Dimensions are in millimetres unless otherwise shown.
2. Work to given dimensions. Do not scale from drawing.
3. Check all dimensions on site prior to construction and fabrication.
4. Bring any discrepancies to the attention of the proprietor & architect.



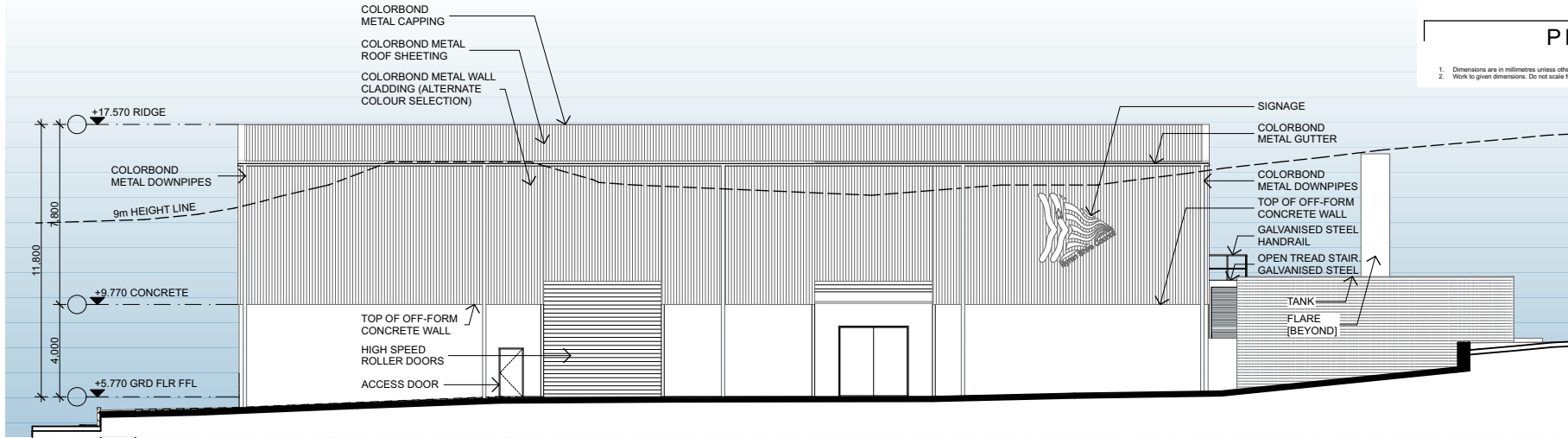
NORTH ELEVATION
SCALE: 1:200



SOUTH ELEVATION
SCALE: 1:200

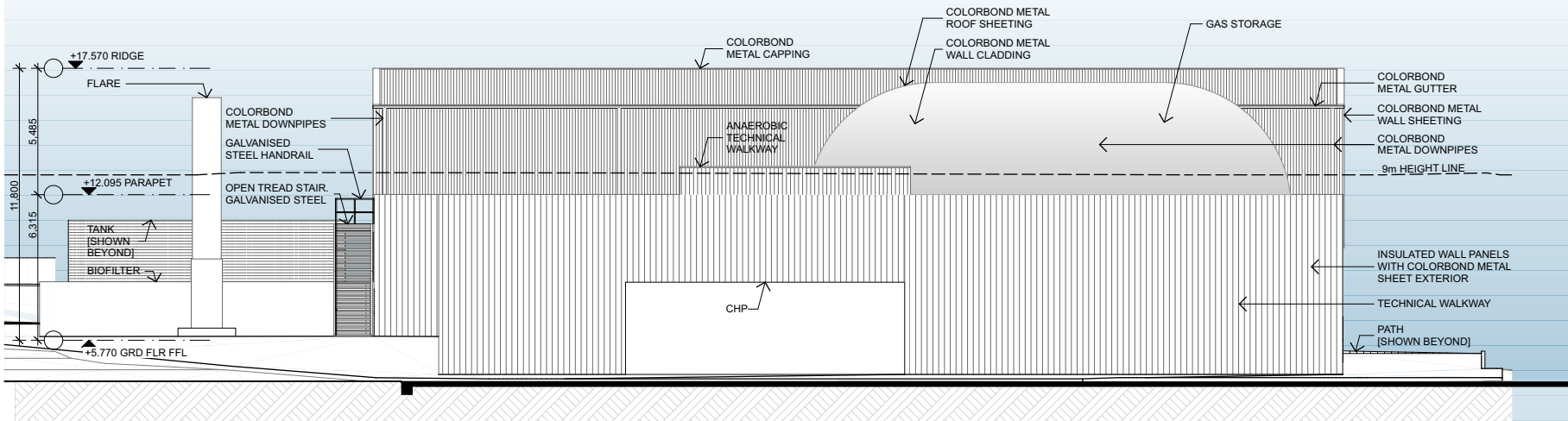
PRELIMINARY

1. Dimensions are in millimetres unless otherwise shown.
2. Work to given dimensions. Do not scale from drawing.
3. Check all dimensions on site prior to construction and fabrication.
4. Bring any discrepancies to the attention of the proprietor & architect.



EAST ELEVATION

SCALE: 1:200



WEST ELEVATION

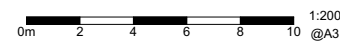
SCALE: 1:200

**4312
SK3102**

RevB 20/4/22

East & West Elevations - Main Building

Byron Bay Bioenergy Facility
45 Wallum Place, Byron Bay, NSW



SHAC

Nominated Architect Justin Hamilton (6160) | ABN 32 131 584 846

Drawing and design © SHAC Pty Ltd. The signed control copy of this drawing is held by SHAC Pty Ltd. | Ref: VolumeRefProject4300/3102 Byron Bay Bioenergy Facility/512 Sketch Design/4312_512/218 - DA submission with new Access Road - Add height lines.ppt date:20/4/22 time: 4:44 pm