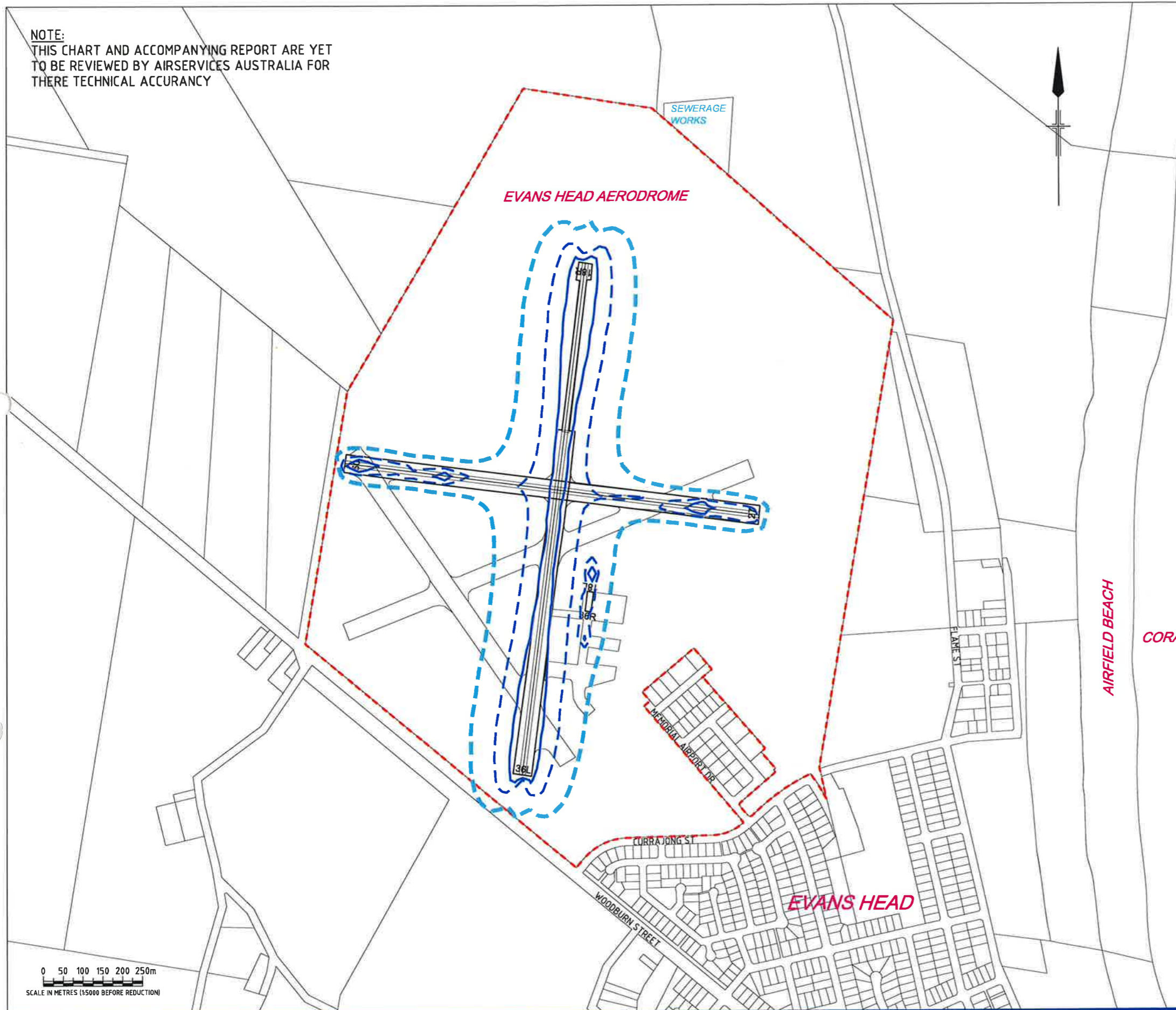


NOTE:
THIS CHART AND ACCOMPANYING REPORT ARE YET
TO BE REVIEWED BY AIRSERVICES AUSTRALIA FOR
THEIR TECHNICAL ACCURACY



	Runway Utilisation Table				Circuits		Totals
	Arrivals		Departures		Day	Night	
	Day	Night	Day	Night			
Runway 18R							
DHC6	0.0534	0.0028	0.0534	0.0028	0.0000	0.0000	0.1124
BEC58P	0.3171	0.0089	0.3171	0.0089	0.1353	0.0071	0.7944
GASEPV	0.4389	0.0214	0.4389	0.0214	0.7187	0.0285	1.8658
GASEPF	1.1828	0.0478	1.1828	0.0478	3.1746	0.0958	5.8910
DC3	0.0274	0.0000	0.0274	0.0000	0.0000	0.0000	0.0548
VAMPIRE	0.0082	0.0000	0.0082	0.0000	0.0110	0.0000	0.0274
SPRFIRE	0.0082	0.0000	0.0082	0.0000	0.0110	0.0000	0.0274
WIRRAWAY	0.0082	0.0000	0.0082	0.0000	0.0110	0.0000	0.0274
TIGERMOTH	0.0184	0.0000	0.0184	0.0000	0.0219	0.0000	0.0547
Totals	2.0404	0.0809	2.0404	0.0809	4.0815	0.1312	8.4553
Runway 36L							
DHC6	0.0534	0.0028	0.0534	0.0028	0.0000	0.0000	0.1124
BEC58P	0.3171	0.0089	0.3171	0.0089	0.1353	0.0071	0.7944
GASEPV	0.4389	0.0214	0.4389	0.0214	0.7187	0.0285	1.8658
GASEPF	1.1828	0.0478	1.1828	0.0478	3.1746	0.0958	5.8910
DC3	0.0274	0.0000	0.0274	0.0000	0.0000	0.0000	0.0548
VAMPIRE	0.0082	0.0000	0.0082	0.0000	0.0110	0.0000	0.0274
SPRFIRE	0.0082	0.0000	0.0082	0.0000	0.0110	0.0000	0.0274
WIRRAWAY	0.0082	0.0000	0.0082	0.0000	0.0110	0.0000	0.0274
TIGERMOTH	0.0184	0.0000	0.0184	0.0000	0.0219	0.0000	0.0547
Totals	2.0404	0.0809	2.0404	0.0809	4.0815	0.1312	8.4553
Runway 09							
GASEPV	0.1315	0.0000	0.1315	0.0000	0.0438	0.0000	0.3088
GASEPF	1.4439	0.0224	1.4439	0.0224	1.1893	0.0447	4.1868
Totals	1.5754	0.0224	1.5754	0.0224	1.2331	0.0447	4.4734
Runway 27							
GASEPV	0.1315	0.0000	0.1315	0.0000	0.0438	0.0000	0.3088
GASEPF	1.4439	0.0224	1.4439	0.0224	1.1893	0.0447	4.1868
Totals	1.5754	0.0224	1.5754	0.0224	1.2331	0.0447	4.4734
Runway 18L							
S70	0.0287	0.0089	0.0287	0.0089	0.0000	0.0000	0.0712
B206	0.1157	0.0158	0.1157	0.0158	0.0000	0.0000	0.2630
Totals	0.1424	0.0247	0.1424	0.0247	0.0000	0.0000	0.3342
Runway 36R							
S70	0.0287	0.0089	0.0287	0.0089	0.0000	0.0000	0.0712
B206	0.1157	0.0158	0.1157	0.0158	0.0000	0.0000	0.2630
Totals	0.1424	0.0247	0.1424	0.0247	0.0000	0.0000	0.3342
Grand Totals	7.2534	0.2580	7.2534	0.2580	10.5416	0.3518	26.5258

Note:
Where figures have been rounded, discrepancies may occur between totals and the sums of component items.

AS2021 Table of Building Site Acceptability Based on ANEF Zones

Building Type	ANEF Zone of Site		
	Acceptable	Conditional	Unacceptable
House, home unit, flat, caravan park	Less than 20 ANEF	20 to 25 ANEF	Greater than 25 ANEF
Hotel, motel, hostel	Less than 25 ANEF	25 to 30 ANEF	Greater than 30 ANEF
School, university	Less than 20 ANEF	20 to 25 ANEF	Greater than 25 ANEF
Hospital, nursing home	Less than 20 ANEF	20 to 25 ANEF	Greater than 25 ANEF
Public building	Less than 20 ANEF	20 to 30 ANEF	Greater than 30 ANEF
Commercial building	Less than 25 ANEF	25 to 35 ANEF	Greater than 35 ANEF
Light industrial	Less than 30 ANEF	30 to 40 ANEF	Greater than 40 ANEF
Other industrial	Acceptable in all ANEF zones		

Table sourced from AS2021-2000, Table 2.1

DATUM:

Chart datum: AMG (Zone 56)
Approximate location: 29 05.6 south latitude and 153 25.2 east longitude
Approximate elevation: 6.1m (20')

Liability Disclaimer for ANEF Charts

The aircraft noise contours on this chart have been calculated using the best available modelling process. The data input to that process are forecasts, and Airservices cannot warrant their ultimate correctness. Airservices accepts no liabilities for any reliance placed on any data on this chart by any third party. Airservices accepts no responsibility for any interpretation of this data by third parties.

AIRSERVICES AUSTRALIA ENDORSEMENT

This plan was endorsed for technical accuracy by the Airspace and Environment Regulatory Unit of Airservices Australia. Original signed copies are held on file by Airservices Australia and Richmond Valley Council.

Signed: _____ AIRSERVICES AUSTRALIA

Date: ____/____/____ AIRSERVICES AUSTRALIA

LEGEND:

- 20 ANEF CONTOURS
- - - 25 ANEF CONTOURS
- 30 ANEF CONTOURS

PRELIMINARY

No	Revision	Note	Date
C	PRELIMINARY ISSUE - REVISED TO 2025 ANEF		21.4.05
B	PRELIMINARY ISSUE - AMENDED AS PER A&A COMMENTS		03.2.05
A	PRELIMINARY ISSUE		10.12.04



Copyright - This document is and shall remain the property of GHD Pty Ltd.
GHD Conditions of Use
This document may only be used for the purpose for which it was commissioned & in accordance with the terms of engagement for the commission.

GHD
MANAGEMENT ENGINEERING ENVIRONMENT
GHD Pty Ltd ACN 008 488 373
201 Charlotte Street Brisbane QLD 4000
GPO Box 988 Brisbane QLD 4001
T 61 7 3316 3000 F 61 7 3316 3333
E bneal@ghd.com.au www.ghd.com.au

Scale	AS SHOWN	DO NOT SCALE
Drawn	D.GOODWIN	Designed DWG/IS
Drafting Check		Design Check
Approved		
Date		

Client	RICHMOND VALLEY COUNCIL	
Project	EVANS HEAD AERODROME - 2025 ANEF	
Title	DRAFT 2025 ANEF CONTOURS	
Original Size	A1	
Drawing No:	41-14121-02	
Rev:	C	