

## Attachment A - Properties affected by this Planning Proposal

Figure 1: Subject land (Source: Shoalhaven City Council, 2021)

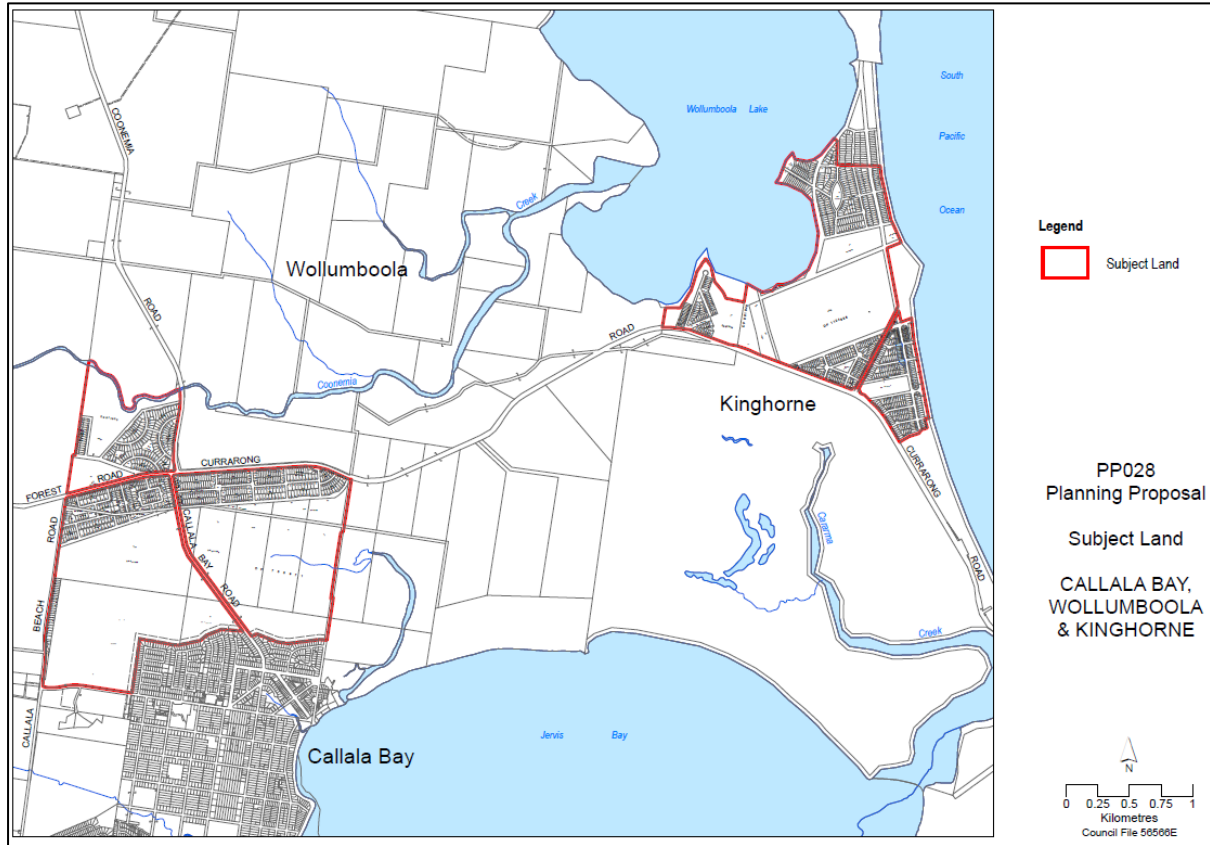


Table 1: List of properties affected by this Planning Proposal

Lot/s	DP	Description	Current Zone	Proposed Zone/s
<b>Callala Bay and Wollumboola properties</b>				
20	1263402	North of Emmett Street, north & west of properties in Stott Crescent, Callala Bay.	DM, RU2	R1, C3, RE1, C2
599 - 628	11388	Paper subdivision lots facing Callala Beach Rd.	DM	R1, RE1, C2
9 – 11, 17, 18	253793	Lots adjacent to Callala Beach Rd	DM	R1, RE1, C2
53	772178	Lot directly north of existing Callala Bay residential area, split by Callala Bay Rd.	DM	RE1, C2
503 – 509	877900	Lots surrounding northern paper subdivision area.	DM	C2, SP2 (Road)
443 – 474, 481 – 656, 664 – 693, 696 - 698	14958	Northern paper subdivision lots - east of Callala Bay Rd and south of Currarong Rd.	DM	C2



Department of Planning and Environment

Lot/s	DP	Description	Current Zone	Proposed Zone/s
18 – 88, 90 – 162, 165 -167, 169 – 187, 197 – 208, 221 – 222, 229 – 273, 177 – 281, 293 – 358, 373 – 404, 410 - 438	14959	Northern paper subdivision lots - north of Forest Rd and west of Coonemia Rd	DM	C2
28, 29, Part 30	755971	Lots between Callala Bay Road and Wowly Lagoon.	DM	C2
104 – 112, 158 – 163, 165 – 178, 180 - 189	877898	Various lots including small paper subdivision lots north of Callala Bay.	DM	C2
8 - 23	877899	Paper subdivision lots.	DM	C2
Part 555	1254135	Paper subdivision road reserves.	DM, RU2	C2
UPNs: 103896, Part 108327, 105080, 102651, 103835	-	Paper subdivision road reserves zoned RU2 in the east	DM, RU2, SP2 (Road)	SP2 (Road), C2, RE1
UPNs: 106499, 102555, 102646, 102650, 102645	-	Road reserve (Crown) south of Forest Road and Currarong Roads.	DM	C2
Coonemia Creek	Coonemia Creek	Coonemia Creek	RU2	C2
<b>Kinghorne Properties</b>				
3411, 3412	1104686	Lots in central part of subject land (2)	DM	C2
2560 - 2576	12720	Paper subdivision lots, south-east area, between Currarong Rd and Warrain Beach.	DM	C2
2572 - 2734				
2736 - 2757				
2759 - 2838				
2840 - 2915				
2917- 2939				
2941 - 2945				
1 - 27	13393	Paper subdivision lots and surrounds in northern area, between Lake Wollumboola and Warrain Beach. Excludes paper subdivision lots already zoned E3.	DM	C2
62 - 109				
138 - 206				
222 - 335				
337 - 338				
340				
342 - 344				



Department of Planning and Environment

Lot/s	DP	Description	Current Zone	Proposed Zone/s
2559				
2456 - 2472	16366	Paper subdivision lots in south-west, between Currarong Rd and Lake Wollumboola.	DM	C2
2499 - 2555				
31	861840	Lot in central area.	DM	C2
25, 26	863737	Lot in central area and lot next to Sewage Pumping Station.	DM	C2
8	1255835	Council-owned land Sewerage Pumping Station	DM	SP2 – Sewerage System
27	863737	Council-owned land Sewerage Pumping Station	DM	SP2 – Sewerage System
6831	877474	Lot in south-west, surrounding paper subdivision lots.	DM	C2
888	1254136	Paper subdivision road reserves south-west.	DM	C2
7	1255835	Paper subdivision road reserves central and north. Paper subdivision road reserves south-east.	DM	C2
9				
3411	1104686	Tiny lot containing trig point. Council-owned.	DM	C2