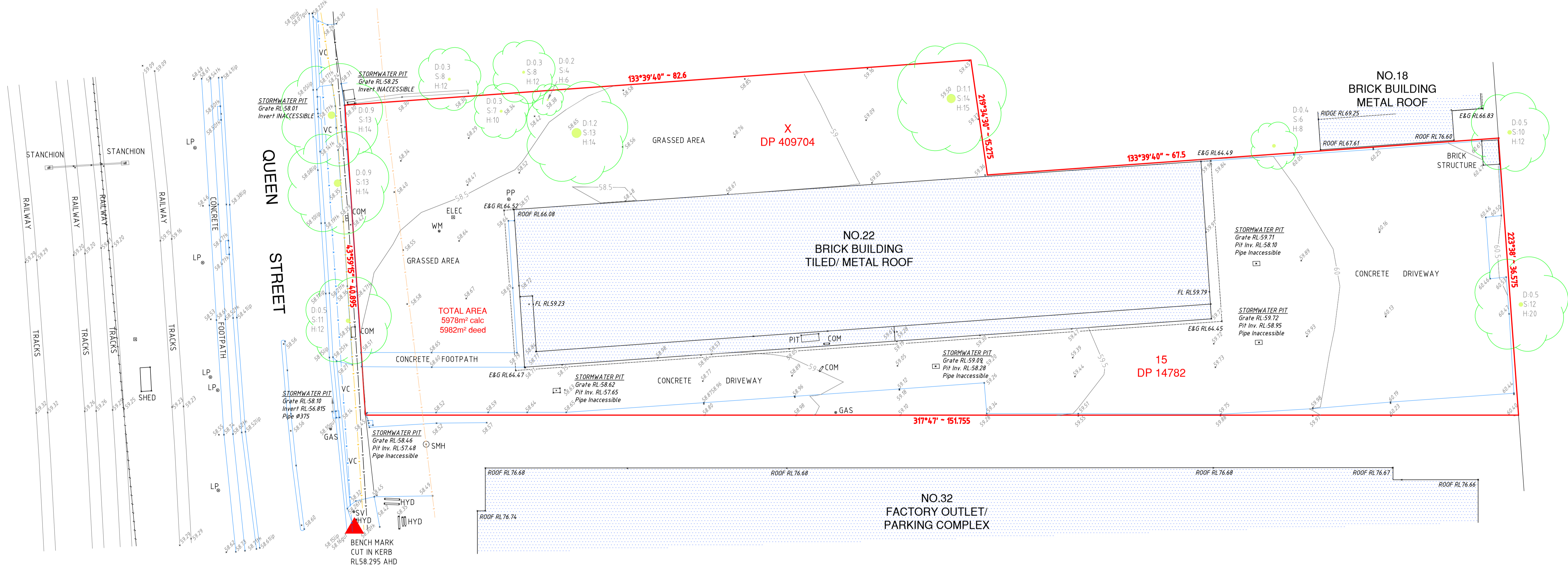


DP 449236



DP 1154928

GENERAL NOTES:-

- THIS SURVEY IS NOT A 'LAND SURVEY' AS DEFINED BY THE SURVEYING AND SPATIAL INFORMATION ACT, 2002.
- THE BOUNDARIES OF THE LAND HAVE NOT BEEN SURVEYED. THE RELATIONSHIP BETWEEN THE BOUNDARIES SHOWN AND FEATURES SURVEYED ARE APPROXIMATE AND SUITABLE FOR PLOTTING PURPOSES ONLY.
- ONLY THOSE SERVICES VISIBLE AT THE TIME OF SURVEY HAVE BEEN LOCATED AND ARE QUALITY LEVEL A AS DEFINED BY AS 5488-2013.
- UNDERGROUND SERVICES HAVE BEEN PLOTTED FROM 'DIAL-BEFORE-YOU-DIG' PLANS AND ARE QUALITY LEVEL D AS DEFINED BY AS 5488-2013. ALL RELEVANT AUTHORITIES MUST BE CONTRACTED TO DETERMINE THE FULL EXTENT OF SERVICES PRIOR TO ANY PLANNING OR WORKS NEAR THE SITE.
- ONLY TREES GREATER THAN 3.5 METRES IN HEIGHT ARE SHOWN ON THIS PLAN AND THEIR POSITIONS ARE DIAGRAMMATIC ONLY AND MAY REQUIRE ADDITIONAL SURVEY WHERE CRITICAL TO DESIGN.
- CONTOURS ARE INDICATIVE AT GROUND FORM ONLY. SPOT LEVELS ONLY SHOULD BE USED FOR CALCULATIONS OF QUANTITIES WITH CAUTION.
- CONTOUR INTERVAL 0.5 m.
- ALL SETOUT LEVELS MUST BE REFERRED TO THE BENCH MARK.
- THE ORIENTATION OF THIS PLAN IS APPROXIMATE TRUE NORTH BASED ON THE ASSUMPTION THAT THE VARIATION OF TRUE NORTH TO MGA NORTH IS 1°06'. THIS HAS NOT BEEN VERIFIED AS PART OF THIS SURVEY AND SHOULD YOU REQUIRE A MORE ACCURATE DETERMINATION OF TRUE NORTH A FURTHER SURVEY IS REQUIRED.

LEGEND:-

- VC denotes VEHICLE CROSSING
- TK denotes TOP OF KERB
- GUT denotes KERB GUTTER
- LIP denotes LIP LINE
- COM denotes COMMUNICATIONS PIT
- ELEC denotes ELECTRICAL PILLAR
- GAS denotes GAS MARKER/LID
- PP denotes POWER POLE
- LP denotes LIGHT POLE
- HYD denotes HYDRANT
- WM denotes WATER METER
- D-S.H denotes DIAMETER, SPREAD and HEIGHT OF TREE

UNDERGROUND SERVICES LEGEND - QUALITY LEVEL D (AS 5488-2013)

W	POTABLE WATER MAIN
S	SEWER MAIN
C	COMMUNICATIONS CABLES
E	ELECTRICITY CABLES
G	GAS MAIN
—	OVERHEAD POWERLINES

APPROXIMATE POSITION ONLY VIDE 'DIAL-BEFORE-YOU-DIG' PLANS JOB No. 9422221. WHERE CRITICAL TO DESIGN, UNDERGROUND SERVICES SHOULD BE LOCATED BY MORE ACCURATE METHODS.

CAUTION: FIBRE OPTIC CABLES ARE PRESENT IN THIS AREA

SERVICES NOTES:-

- ONLY THOSE SERVICES VISIBLE AT THE TIME OF SURVEY HAVE BEEN LOCATED AND IF SHOWN AS '+' 89.61' ARE QUALITY LEVEL A AS DEFINED BY AS 5488-2013. LEVELS SHOWN ARE SURFACE LEVELS UNLESS NOTED OTHERWISE.
- UNDERGROUND SERVICES HAVE BEEN PLOTTED FROM 'DIAL-BEFORE-YOU-DIG' PLANS AND ARE QUALITY LEVEL D AS DEFINED BY AS 5488-2013. ALL RELEVANT AUTHORITIES MUST BE CONTRACTED TO DETERMINE THE FULL EXTENT OF SERVICES PRIOR TO ANY PLANNING OR WORKS NEAR THE SITE.

